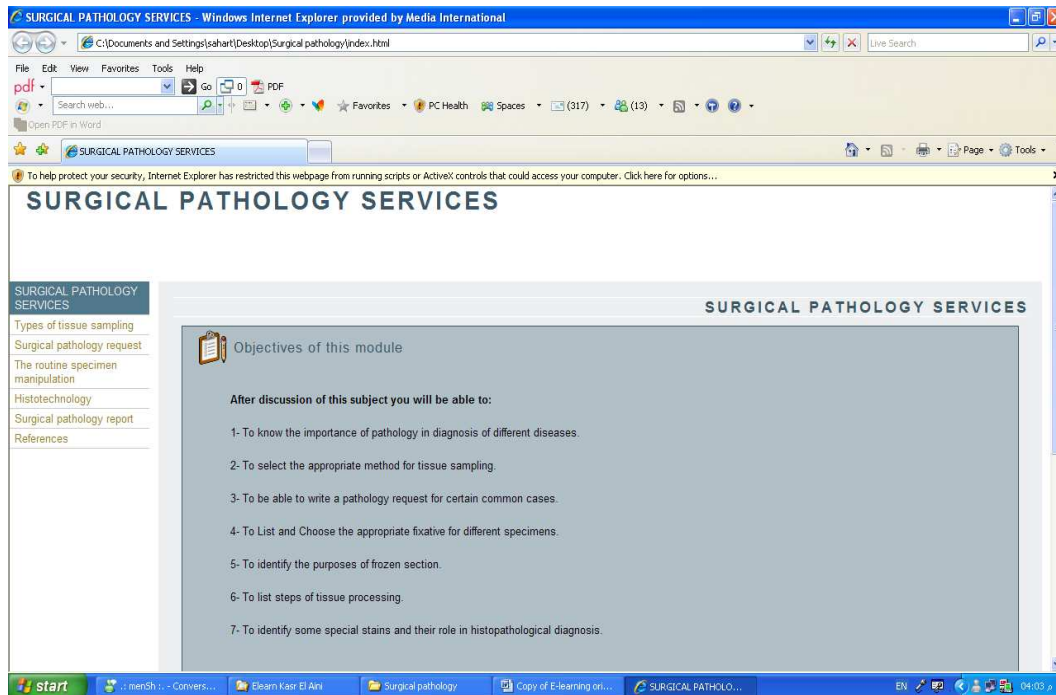


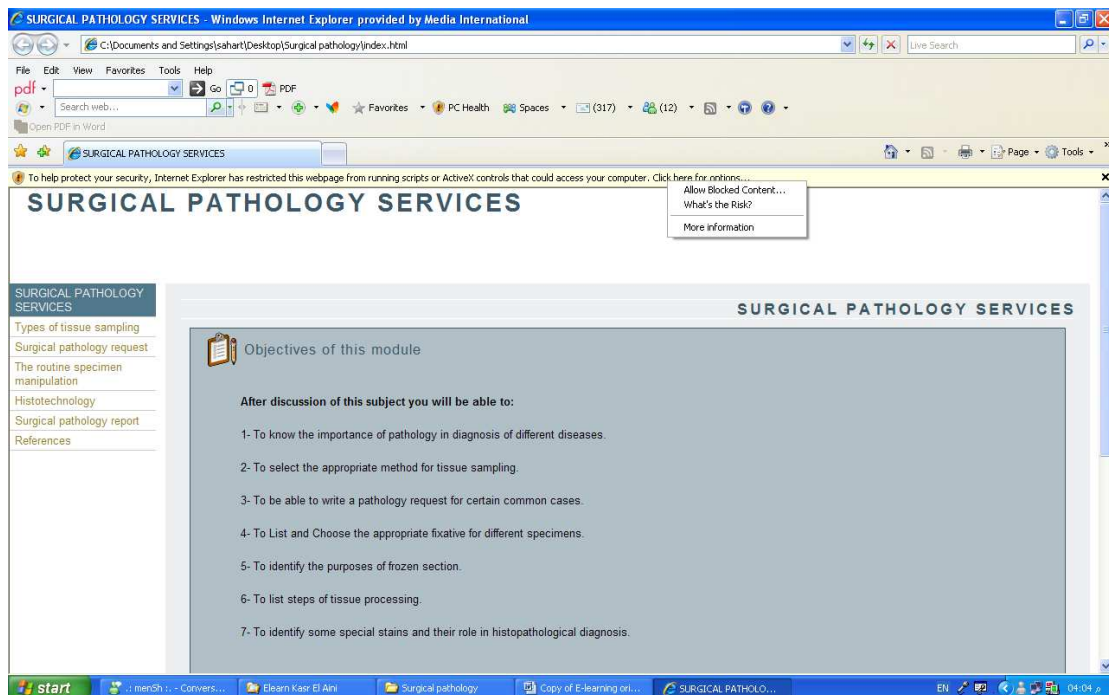
Orientation for pathology elearning

Click on icon called Index

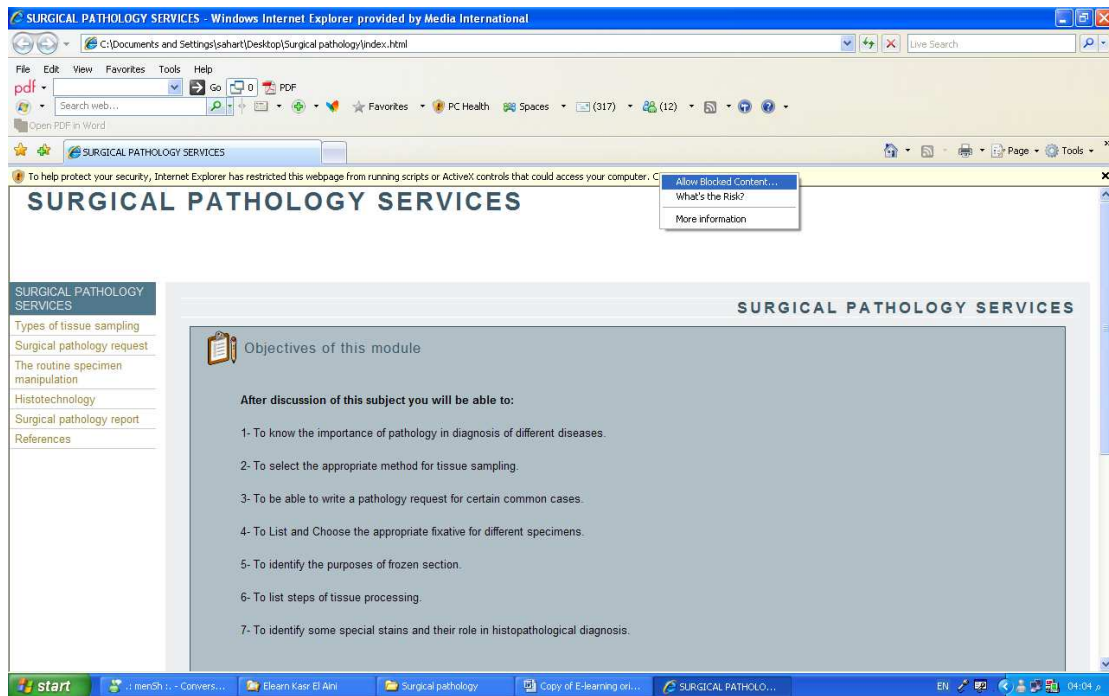
The first page will appear. Sometimes a yellow space appear on the top of the page, ending with this sentence .. Click here for more options.



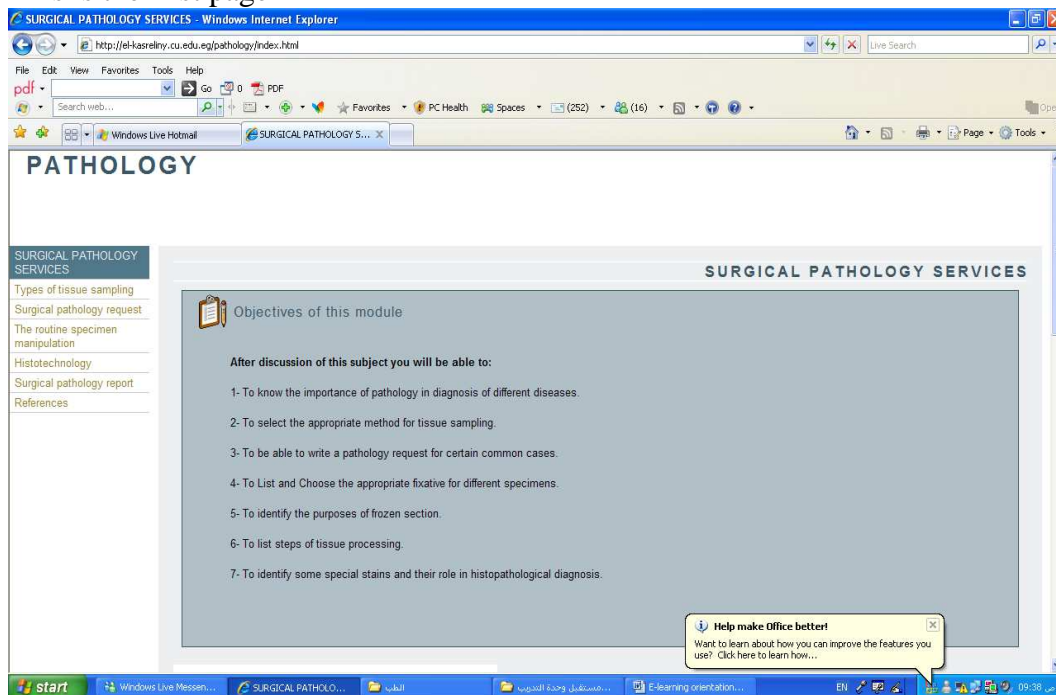
Click on it .. the following toolbox will appear



Click on allow blocked content



This is the first page



- You can navigate through the course either by:
Clicking on the left bar to pass through successive lessons.

SURGICAL PATHOLOGY SERVICES

Types of tissue sampling

Surgical pathology request

The routine specimen manipulation

Histotechnology

Surgical pathology report

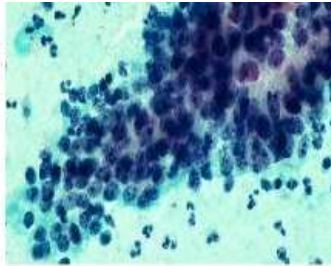
References

Or by clicking on the next and Previous & Next buttons present in the bottom of the pages.

« Previous | Next »

- How can you open different links?
 1. Regarding the included flash files .. You can navigate the contents by clicking on arrows.

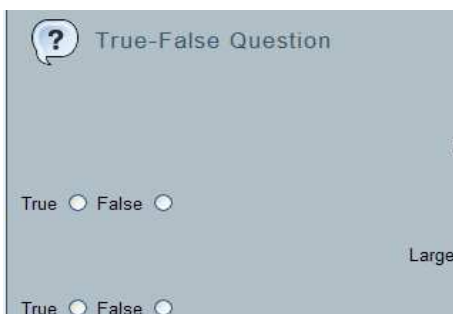
B- Cytopathology:



- What about self assessment?

While you are studying .. you can test yourself through different questions that are included within the lessons .. for example:

1. True and false: choose the correct answer according to your opinion and the computer will reply on your answer immediately.



2. Matching exercises: click on the link

-  Matching 1
-  Matching 2

The exercise will open in a new window ... drag the answers from right column to the suitable phrase from in the left column, when you finished .. click check.

Index =>		
Matching exercise		
Match the items on the right to the items on the left.		
<input type="button" value="Check"/>		
Excision biopsy		
Incisional biopsy.	Part of the lesion is removed	The whole lesion is removed
Endoscopic biopsy		Done through the endoscope
Core biopsy		Performed by using a circular cutting device

The computer will reply on your answers ... correct answers will remain and wrong answers will be removed

Match the items on the right to the items on the left.

Sorry! Try again. Incorrect matches have been removed.
Your score is 25%.

Performed cutting device	Part of the lesion is removed	The whole lesion is removed	Done through the endoscope
--------------------------	-------------------------------	-----------------------------	----------------------------

Matching exercise can be also in the form of drop down menu

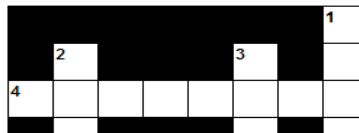
• Glutaraldehyde	???	<input type="button" value="v"/>
• 10% formalin	???	<input type="button" value="v"/>
• Zenker's	???	<input type="button" value="v"/>
• Bouin	???	<input type="button" value="v"/>
• Alcohols	???	<input type="button" value="v"/>
	<ul style="list-style-type: none"> ??? lymph nodes Testes Electron microscopy cytology smears all routine histopathology specimens 	

3. You can also find gap fill exercise: fill empty spaces and submit.

Index =>
Pathology request
Gap-fill exercise
Fill in all the gaps, then press "Check" to check your answers. Use the giving you trouble. You can also click on the "[?]" button to get a clue. or clues!
KASER AL AINI HOSPITALS
Pathology department
REQUEST for PATHOLOGY SERVICES
PATIENT DETAILS:
<input type="text"/>
Sex: <input type="text"/>

- You can also enjoy playing crossword, click on the number .. a space for writing will open ... write the correct word and press enter. You can get the first letter of the word by clicking on hint

Down: 1: Fixation of lymph node tissue Enter Hint



- How you can interact? And who will be available to help you?
If you need help ... send your questions to the following mail cairopath@windowslive.com
Teaching staff will answer you questions and will be available to help and support you.
- How your work on this module will be assessed?
The final exam. Will include at least one question from this online module, with allocated marks of **?????**